

SUPPRESSED

SELECT ⇌

Newbattle College

Total FE/HE FT/PT = 53

# 50 Suppression Threshold

## Newbattle Abbey College 20-21 Performance Indicators

Chart A. Outcomes for FE on recognised qualifications (full-time)

Year		Completed Successful	Partial Success	Withdrawal	Total
15-16	Full Time	48	8	14	70
16-17	Full Time	41	2	10	53
17-18	Full Time	38	13	22	73
18-19	Full Time	54	8	10	72
19-20	Full Time	44	30	7	81
20-21	Full Time	35	8	10	53

Year		% Completed Successful	% Partial Success	% Withdrawal	Total
15-16		68.6%	11.4%	20.0%	70
16-17		77.4%	3.8%	18.9%	53
17-18		52.1%	17.8%	30.1%	73
18-19		75.0%	11.1%	13.9%	72
19-20		54.3%	37.0%	8.6%	81
20-21		66.0%	15.1%	18.9%	53

Chart B1. Outcome Totals for FE on recognised qualifications (part-time)

Year		Completed Successful	Partial Success	Withdrawal	Total
18-19	Total Part-Time FE				
19-20	Total Part-Time FE				
20-21	Total Part-Time FE				

Year		% Completed Successful	% Partial Success	% Withdrawal	Total
18-19					
19-20					
20-21					

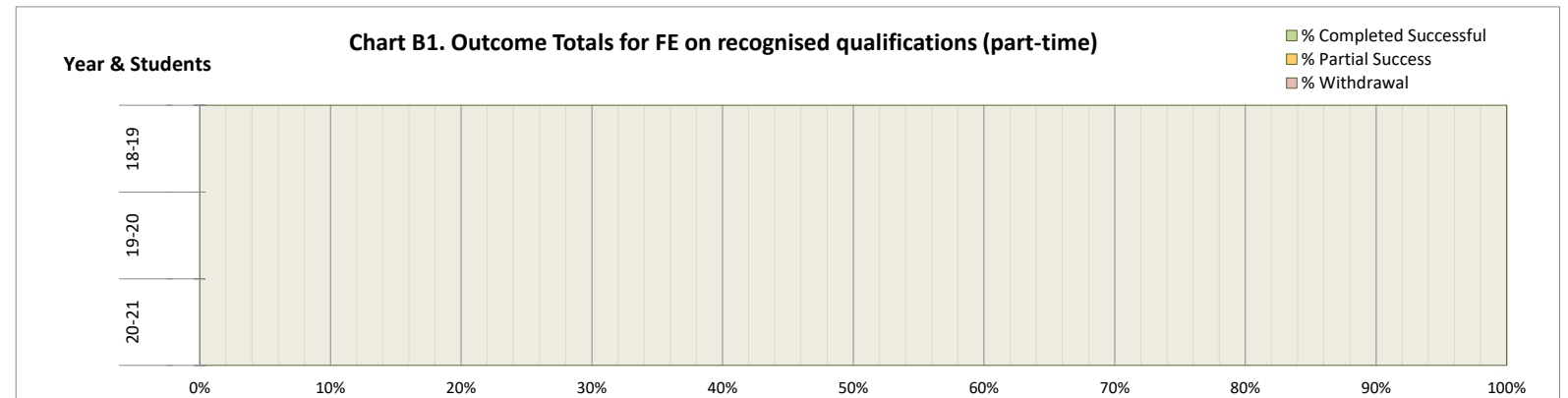
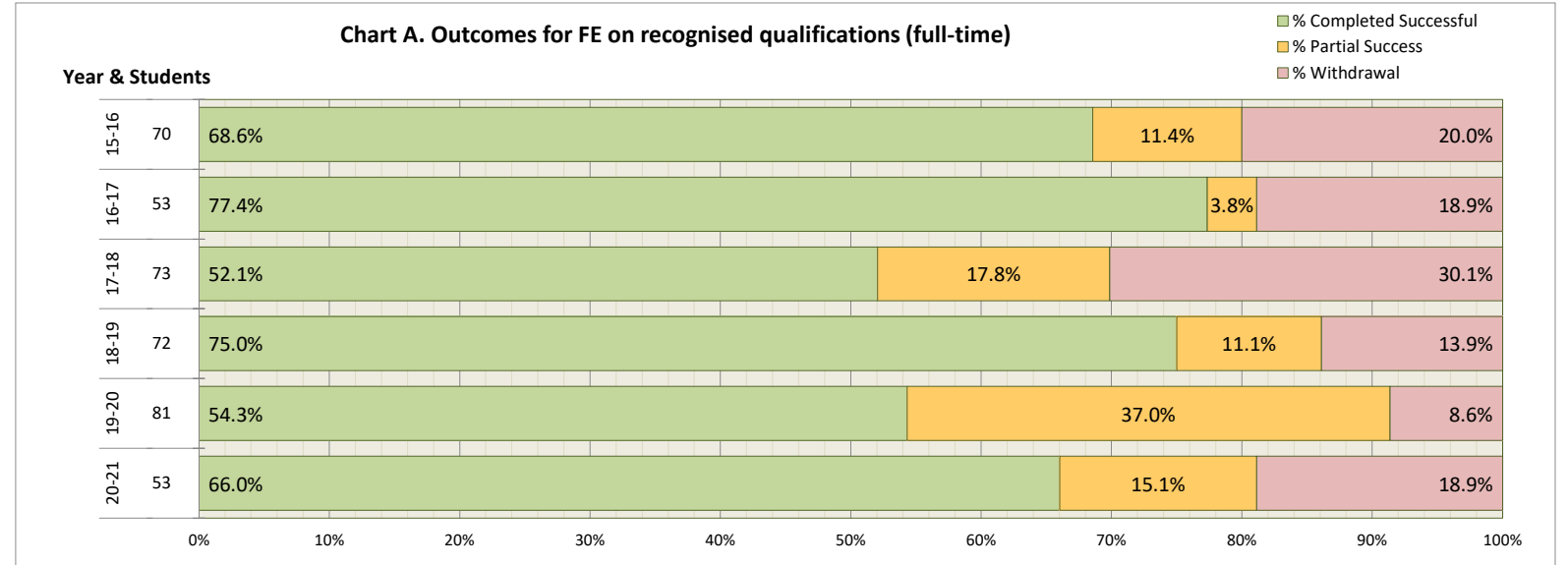


Chart B2. Outcome Breakdown for FE on recognised qualifications (part-time)

Year		Completed Successful	Partial Success	Withdrawal	Total
18-19	under 10 hours 10 up to 40 hours 40 up to 80 hours 80 up to 160 hours 160 up to 320 hours 320 hours up to FT				
19-20	under 10 hours 10 up to 40 hours 40 up to 80 hours 80 up to 160 hours 160 up to 320 hours 320 hours up to FT				
20-21	under 10 hours 10 up to 40 hours 40 up to 80 hours 80 up to 160 hours 160 up to 320 hours 320 hours up to FT				

Year		% Completed Successful	% Partial Success	% Withdrawal
18-19	under 10 hours 10 up to 40 hours 40 up to 80 hours 80 up to 160 hours 160 up to 320 hours 320 hours up to FT			
19-20	under 10 hours 10 up to 40 hours 40 up to 80 hours 80 up to 160 hours 160 up to 320 hours 320 hours up to FT			
20-21	under 10 hours 10 up to 40 hours 40 up to 80 hours 80 up to 160 hours 160 up to 320 hours 320 hours up to FT			

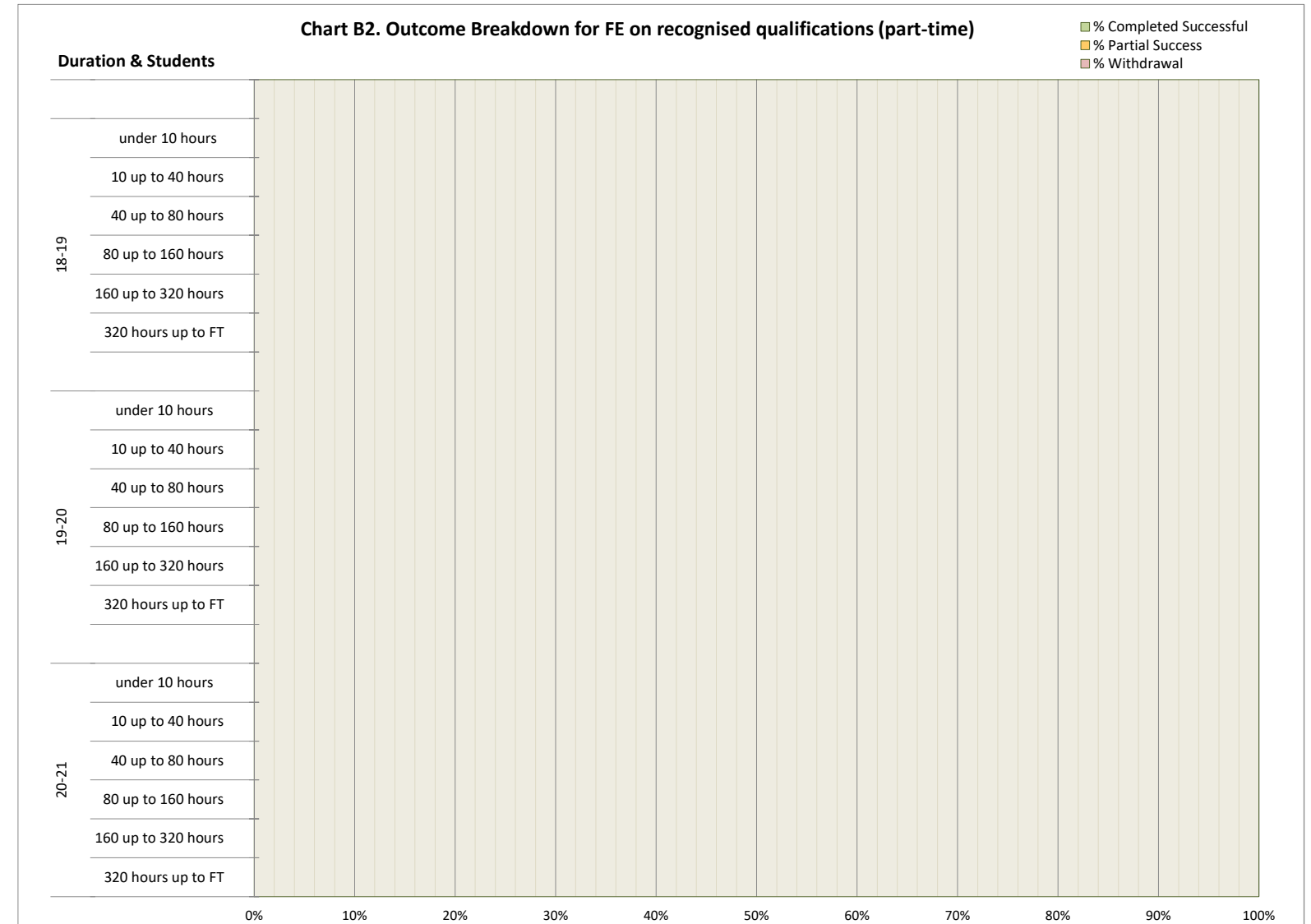


Chart C. Achievement for FE students with partial success

Number of students who complete their course without gaining any units / credits	2	20.0%
Number of students completing their course achieving up to 25% of planned units	3	30.0%
Number of students completing their course achieving 25 to 50% of planned units	5	50.0%
Number of students completing their course achieving 50 to 75% of planned units		
Number of students completing their course achieving at least 75% of planned units		
	<b>10</b>	<b>100%</b>

Chart C: Level of achievement for students funded by the SFC completing an FE course of 160 hours or more who did not achieve 'full' success (An overview of the 'Partial Success' group above)

- Number of students who complete their course without gaining any units / credits
- Number of students completing their course achieving up to 25% of planned units
- Number of students completing their course achieving 25 to 50% of planned units
- Number of students completing their course achieving 50 to 75% of planned units
- Number of students completing their course achieving at least 75% of planned units

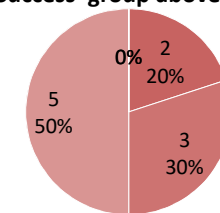


Chart D. Outcomes by age group on courses lasting 160 hours or more

	Completed Successful	Partial Success	Withdrawal	Total
under 18				
18-20 year olds				
21-24 year olds				
25-40 year olds				
41 and Over				

	% Completed Successful	% Partial Success	% Withdrawal
under 18			
18-20 year olds			
21-24 year olds			
25-40 year olds			
41 and Over			

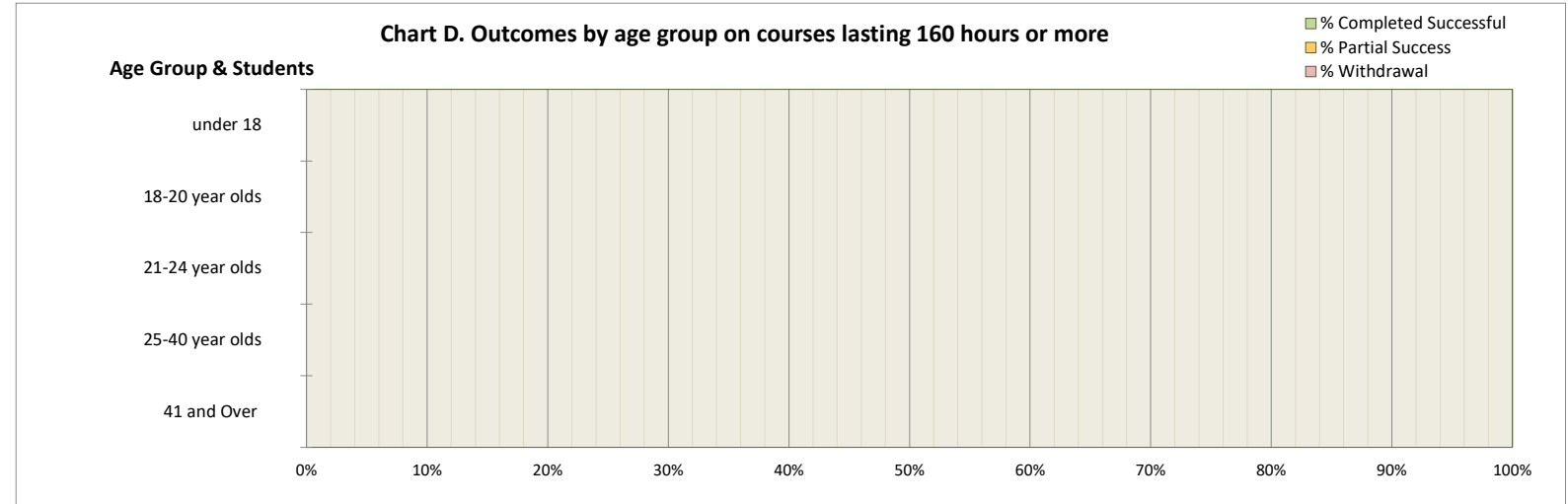
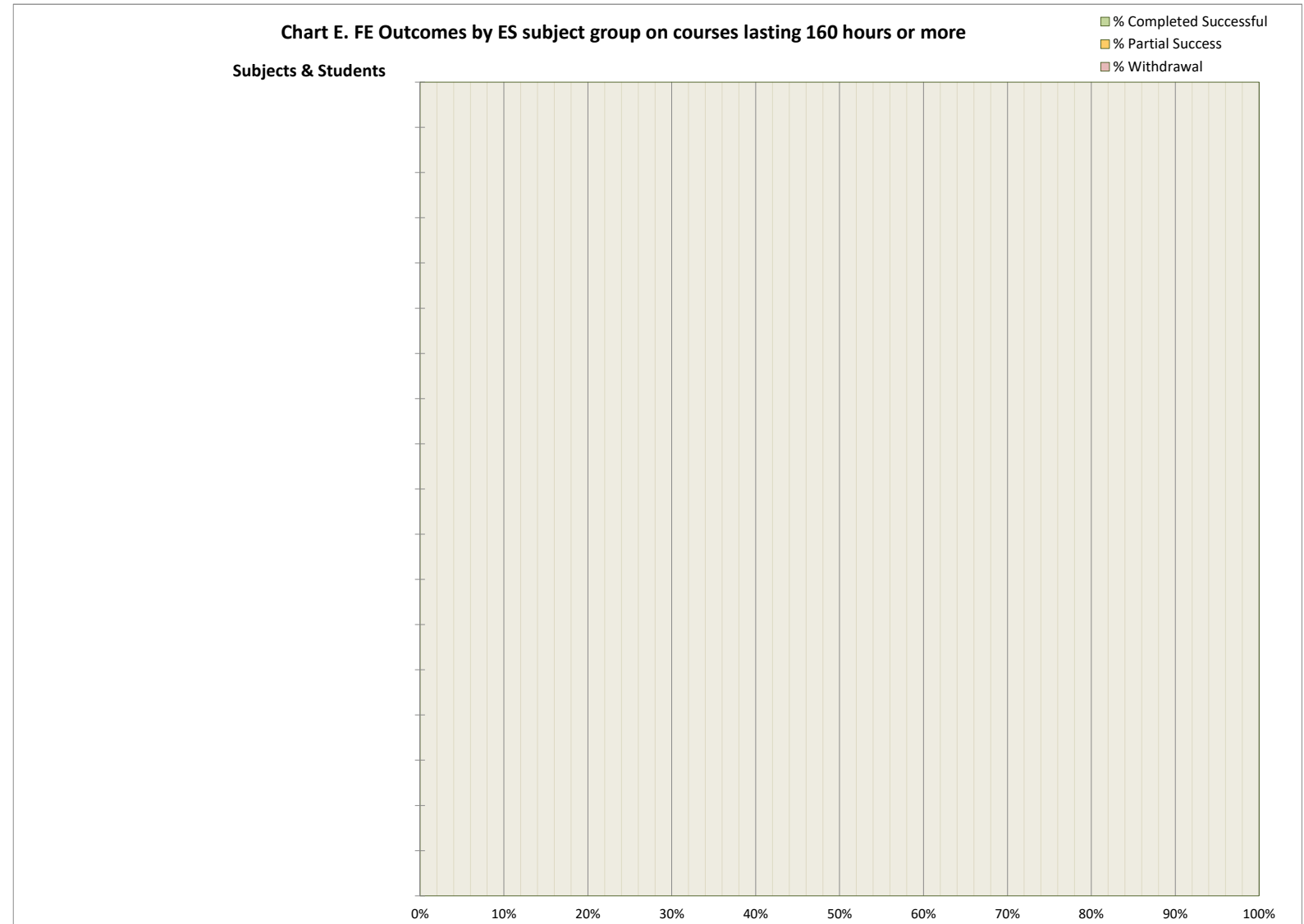


Chart E. FE Outcomes by ES subject group on courses lasting 160 hours or more

	% Completed Successful	Completed Successful	Partial Success	Withdrawal	Total
Sport and Leisure					
Special Programmes					
Social subjects					
Science					
Performing arts					
Nautical studies					
Media					
Languages and ESOL					
Land-based industries					
Hospitality and tourism					
Hairdressing, Beauty and Complementary Therapies					
Engineering					
Education and training					
Construction					
Computing and ICT					
Care					
Business, Management and Administration					
Art and design					

	% Completed Successful	% Partial Success	% Withdrawal



Newbattle Abbey College 20-21 Performance Indicators

Chart F. Outcomes by level and gender on courses lasting 160 hours or more

	Completed Successful	Partial Success	Withdrawal	Total
FE Females				
FE Males				
HE Females				
HE Males				

	% Completed Successful	% Partial Success	% Withdrawal
FE Females			
FE Males			

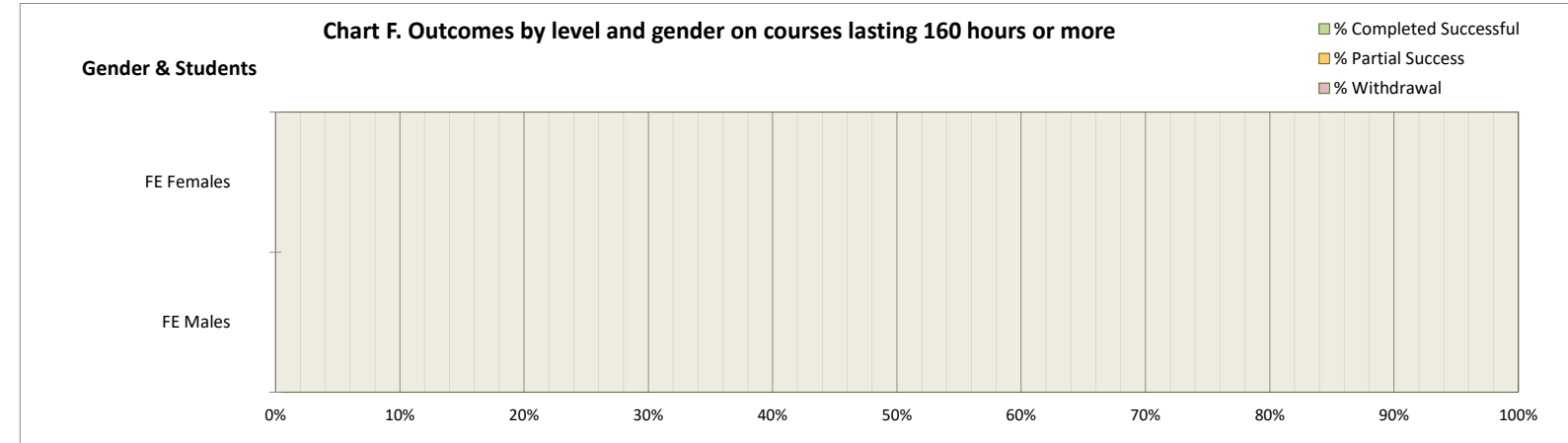


Chart G. Outcomes by key group on courses lasting 160 hours or more

	Completed Successful	Partial Success	Withdrawal	Total
All enrolments over 160 hours	64	10	15	89
10% Most deprived postcode areas				
20% Most deprived postcode areas				
Fees paid by employer				
Ethnic minority				
Disability				
Year of study greater than first year				
Care Experienced				

	% Completed Successful	% Partial Success	% Withdrawal
All enrolments over 160 hours 89	71.9%	11.2%	16.9%
10% Most deprived postcode areas			
20% Most deprived postcode areas			
Fees paid by employer			
Ethnic minority			
Disability			
Year of study greater than first year			
Care Experienced			

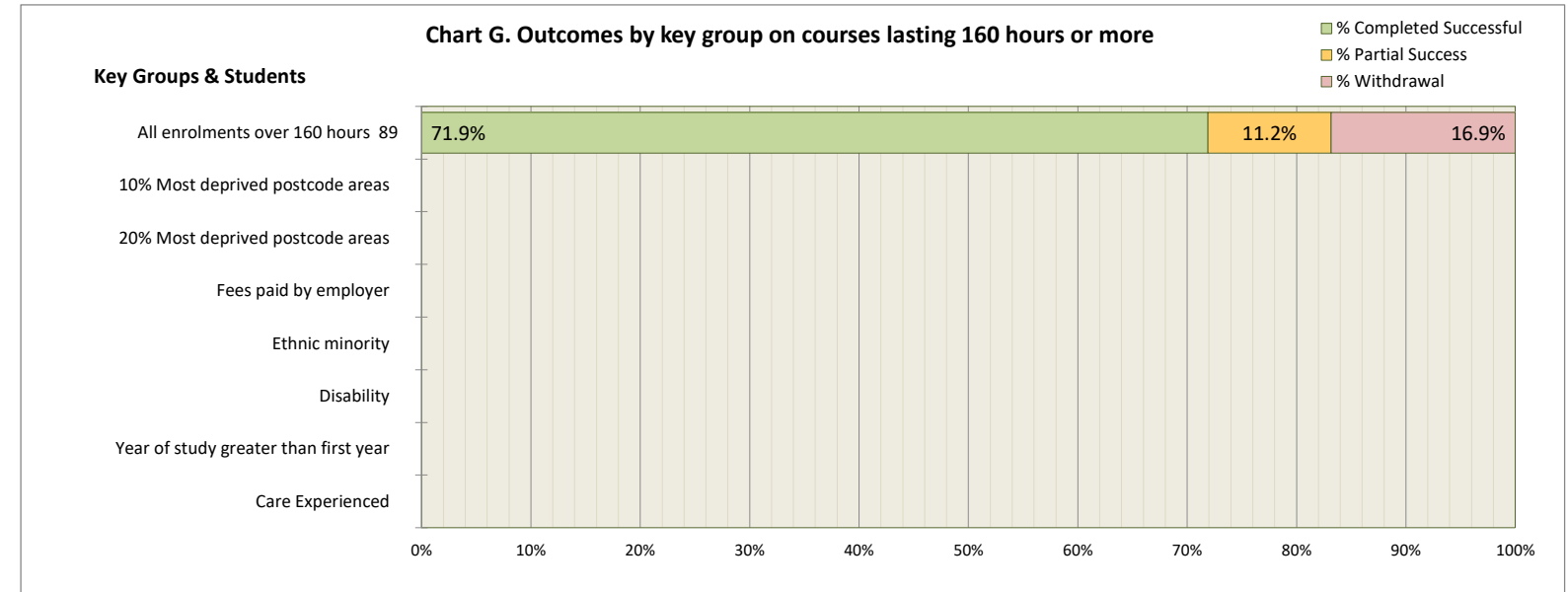


Chart H. Credit targets and achieved (core plus ESF where applicable)

	Credits/WSUMs	Year	Percentage
WSUMs achieved	1,148		
18-19 WSUM target	921	18-19	124.65%
Credits achieved	1,237		
19-20 Credits target	921	19-20	134.31%
Credits achieved	932		
20-21 Credits target	921	20-21	101.19%

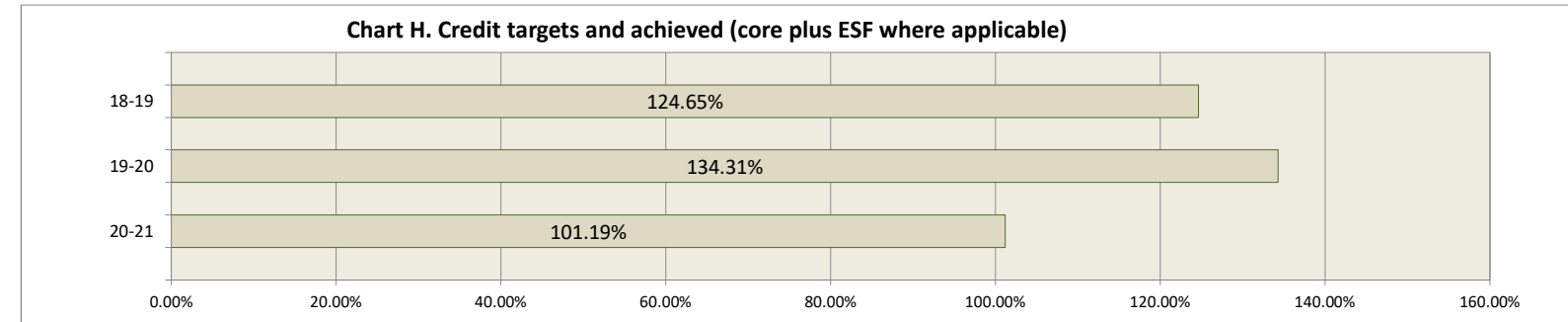


Chart J. Percentage of Full-time permanent teaching staff with a teaching qualification

	Permanent full-time teaching staff	Number with a Teaching Qualification	Year	Percentage
18-19	2	2	18-19	100.0%
19-20	3	3	19-20	100.0%
20-21	2	2	20-21	100.0%

