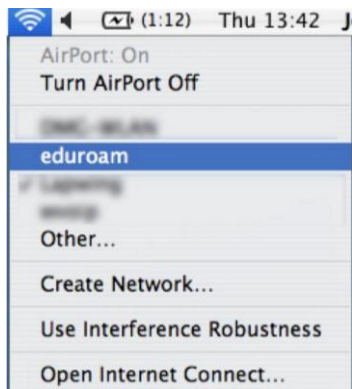


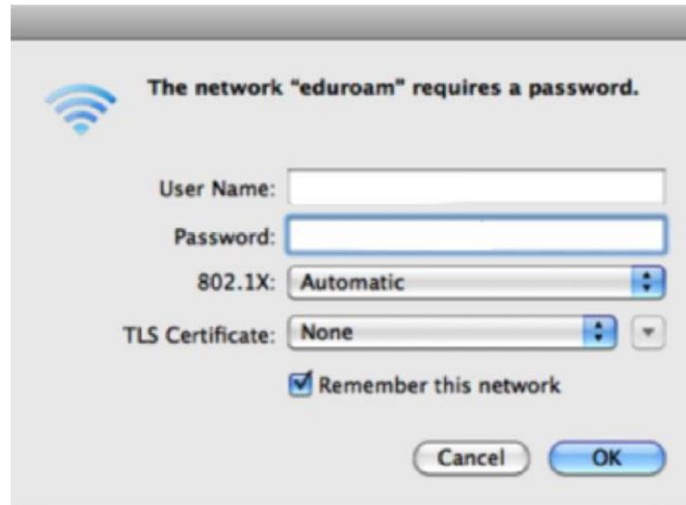
## Manually Configuring **eduroam** -- Mac OS X 10.6

1. Click on the AirPort icon on the top right of your screen and select **eduroam** from the list (you may need to select **Turn AirPort On** first).



2. Enter your username and password based on the following format.

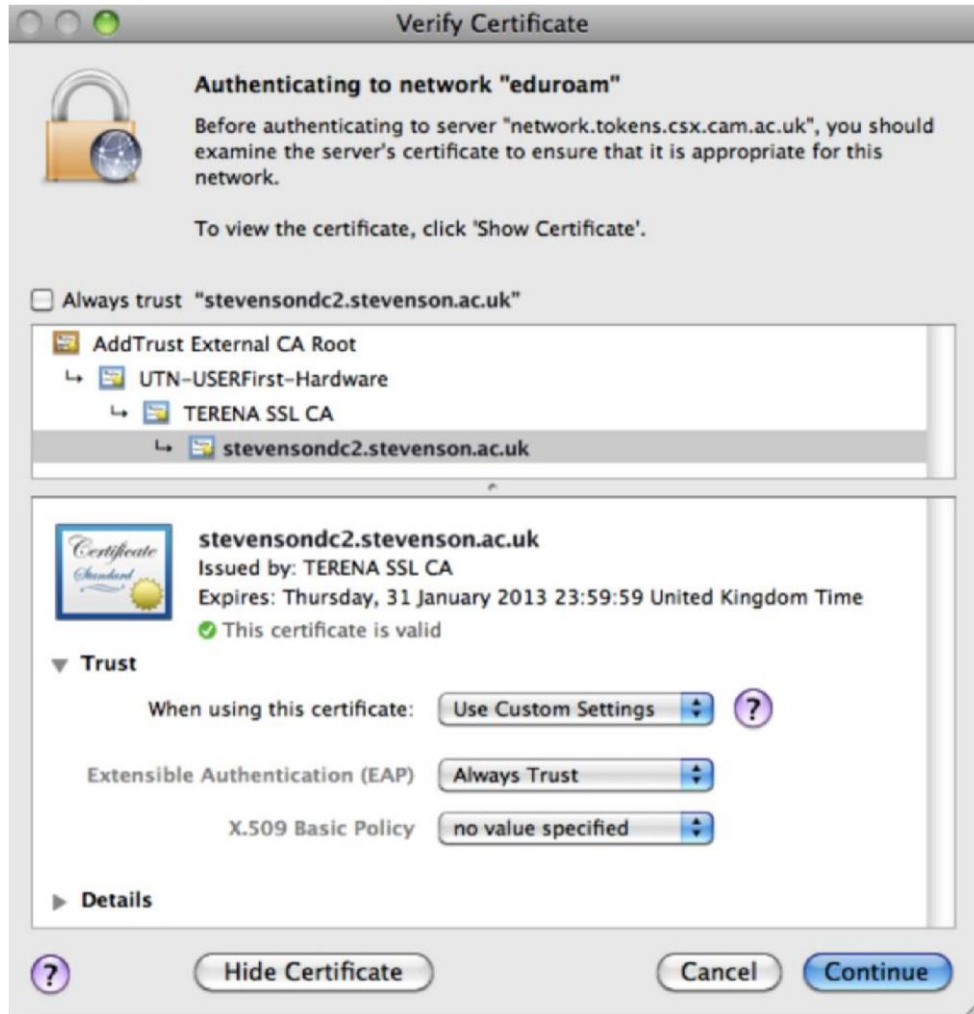
**username@newbattleabbeycollege.ac.uk**



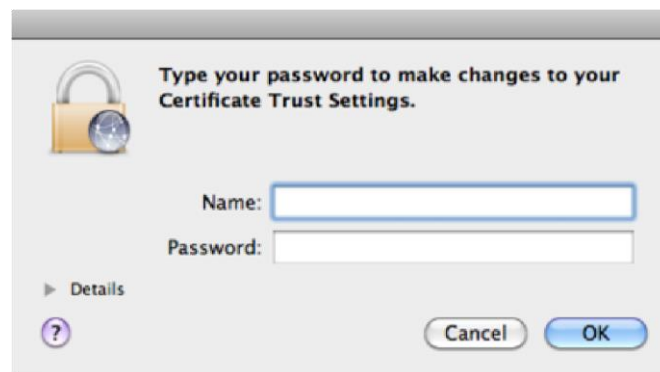
3. In the **Verify Certificate** dialogue box click **Show Certificate**



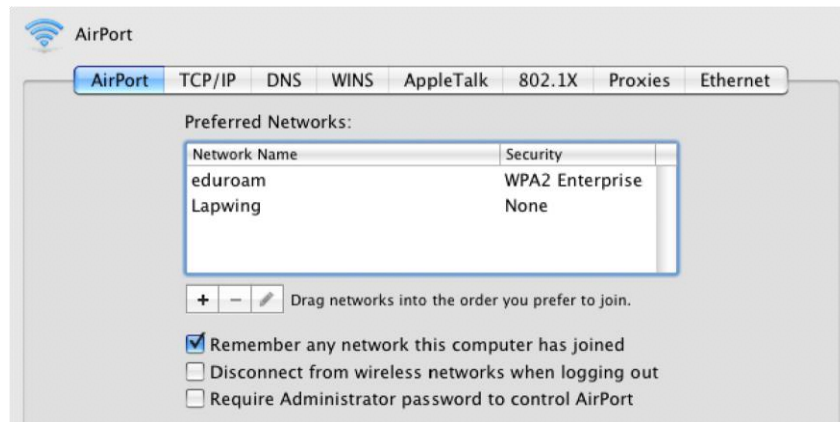
4. Tick the box for **Always Trust "domain.ac.uk"**, then click **Continue**



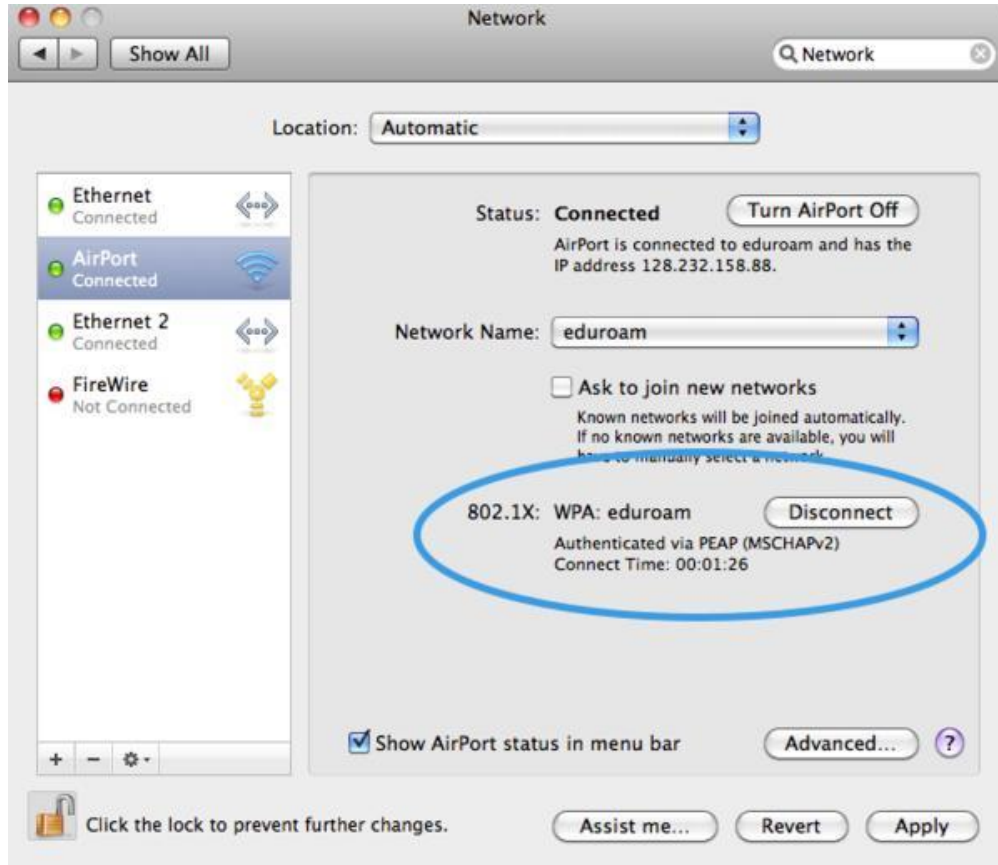
5. In the confirmation box that appears type your Mac OS X **username** and **password** (not the **eduroam** ones!) then select **OK**.



6. Finally, to ensure **eduroam** is selected over other networks in range you may have connected to in the past, click on the **Apple Menu** and select **System Preferences**. Then select **Network**, click **Airport**, then **Advanced**. Move **eduroam** to the top of the list, then click **OK**



7. You should now be connected, as denoted by a green light beside **Airport** and the **Disconnect** button as below.



8. Select **Apply** to save the changes and you can now quit the **System Preferences** application.